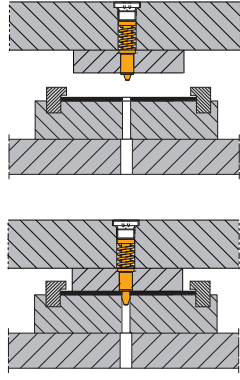


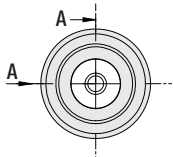
YENİ



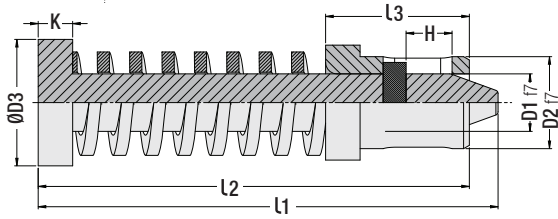
Pilot Ünitesi

Kod: G165

"G165" Pilot Ünitesi; progresif kalıplarda hareketli sacın her bir havtvede merkezlenmesi için kullanılır. Kompakt ve faydalı bir üründür.



$1N = 0.1 daN = 0.102 kgf$

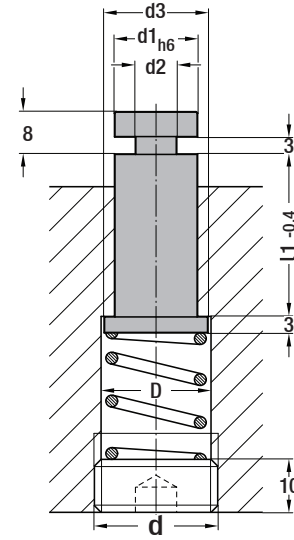


| Sipariş Kodu | F0 (N) Ön Yük | F1 (N) Çalışma Yüğü | D1 | L1 | D2 | D3 | L2 | L3 | K | H |
|--------------|------------------|------------------------|-----|------|----|----|----|----|---|-----|
| G165.05401 | 11 | 30 | | | | | | | | |
| G165.05402 | 25 | 70 | | | | | | | | |
| G165.05403 | 30 | 84 | 5 | 40 | 8 | 11 | 36 | 12 | 3 | 4.5 |
| G165.05404 | 40 | 112 | | | | | | | | |
| G165.05405 | 55 | 155 | | | | | | | | |
| G165.05441 | 11 | 30 | | | | | | | | |
| G165.05442 | 25 | 70 | | | | | | | | |
| G165.05443 | 30 | 84 | 5 | 44 | 8 | 11 | 40 | 16 | 3 | 4.5 |
| G165.05444 | 40 | 112 | | | | | | | | |
| G165.05445 | 55 | 155 | | | | | | | | |
| G165.08481 | 44 | 122 | | | | | | | | |
| G165.08482 | 58 | 164 | | | | | | | | |
| G165.08483 | 79 | 220 | 8 | 48 | 12 | 16 | 41 | 16 | 4 | 4.5 |
| G165.08484 | 123 | 346 | | | | | | | | |
| G165.08485 | 165 | 460 | | | | | | | | |
| G165.08486 | 189 | 530 | | | | | | | | |
| G165.08521 | 44 | 122 | | | | | | | | |
| G165.08522 | 58 | 164 | | | | | | | | |
| G165.08523 | 79 | 220 | 8 | 52 | 12 | 16 | 45 | 20 | 4 | 4.5 |
| G165.08524 | 123 | 346 | | | | | | | | |
| G165.08525 | 165 | 460 | | | | | | | | |
| G165.08526 | 189 | 530 | | | | | | | | |
| G165.10631 | 140 | 391 | | | | | | | | |
| G165.10632 | 245 | 680 | 9.8 | 63.2 | 15 | 18 | 53 | 28 | 4 | 3.5 |
| G165.10633 | 540 | 1512 | | | | | | | | |



Sac Kaldırma Pimi

Kod: G23



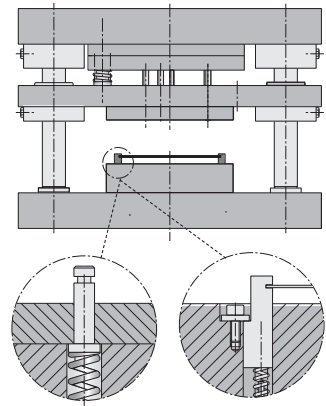
Kod: G23

| d1 h6 | L1-0.4 mm | Ø d2 | Ø d3 | D d |
|----------|--------------|---------|---------|-------------|
| 8 | 20 | 5 | 10 | M12 x1.5 |
| | 25 | | | |
| | 32 | | | |
| | 40 | | | |
| 10 | 25 | 6 | 12 | M14 x1.5 |
| | 32 | | | |
| | 40 | | | |
| 13 | 25 | 7 | 16 | M18 x1.5 |
| | 32 | | | |
| | 40 | | | |
| 16 | 25 | 8 | 20 | M22 x1.5 |
| | 32 | | | |
| | 40 | | | |

Sipariş: G23. d1 x L1

Malzeme: 1.7131 (16MnCr5)
Sertlik: 58-60 HRC

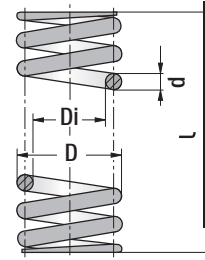
Montaj Örneği



Progresif kalıplarında sacı hizaya alma ve taşıma amaçlı olarak kullanılır. Kurulum için G145 ve G23S ürünlerinden yararlanılabilir.

Sac Kaldırma Yayı

Kod: G23S

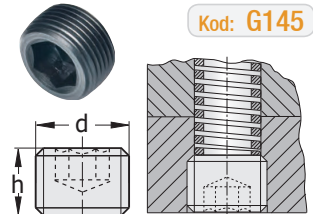


| D | Di | d | L |
|------|------|-----|----|
| 9.5 | 6.5 | 1.5 | 40 |
| 11.5 | 8.5 | 1.5 | 55 |
| 15.5 | 11.5 | 2 | 40 |
| 19.5 | 14.5 | 2.5 | 40 |

L = Yay boyu / kalıp plakası ölçülerine göre seçim

Yay Sıkıştırma Ayar Vidası

Kod: G145



| d Diş | dh Yuva | h Boy | SW Allen |
|-----------|------------|----------|-------------|
| M12 x 1.5 | 10.5 | 10 | 6 |
| M14 x 1.5 | 12.5 | 10 | 6 |
| M18 x 1.5 | 16.5 | 10 | 8 |
| M22 x 1.5 | 20.5 | 10 | 8 |